

NEW!

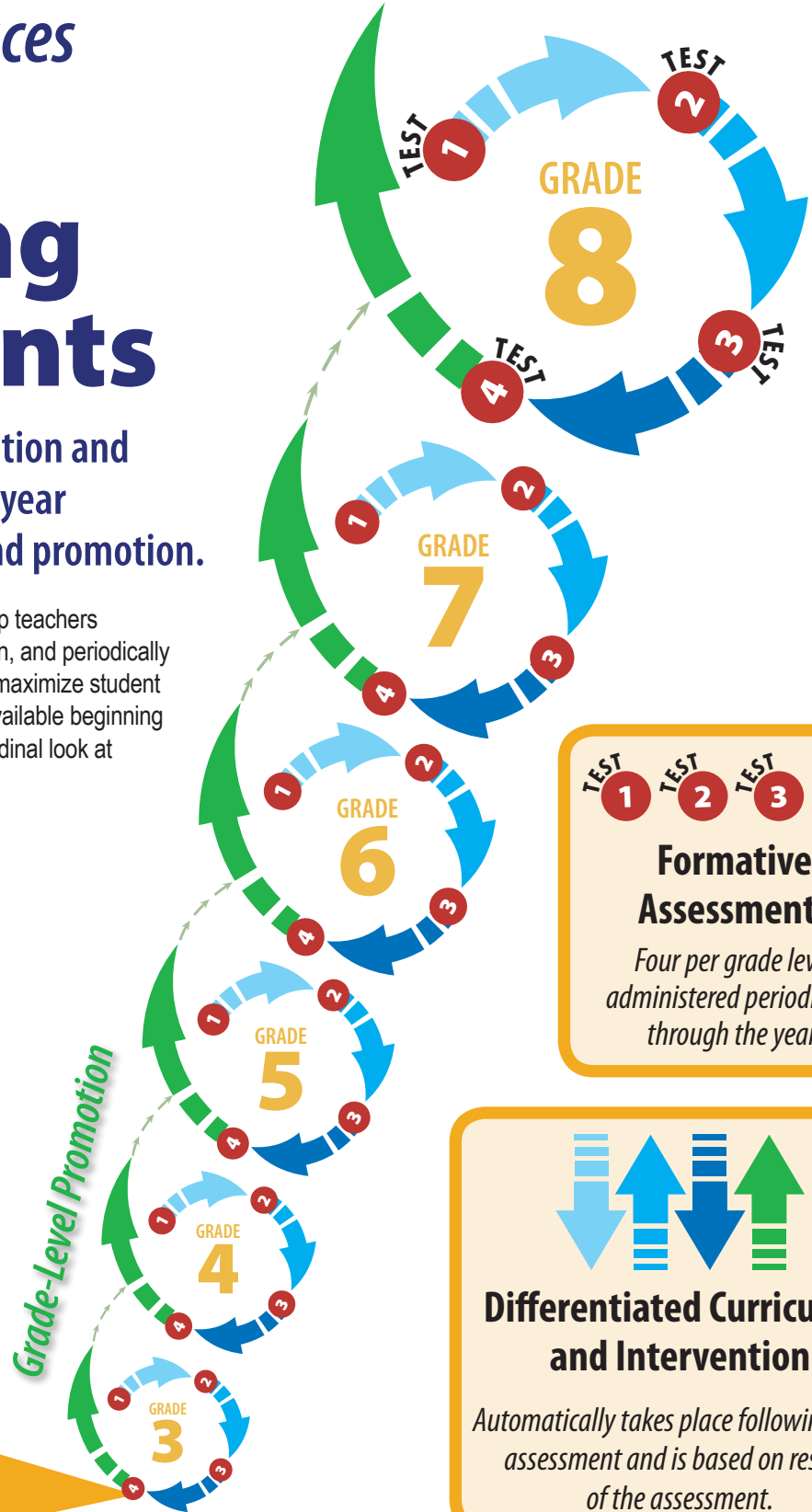
Available for 2010 School Year



Kid's College Introduces Progress Monitoring Assessments

Continuous assessment, intervention and reporting throughout the school year facilitates grade level mastery and promotion.

Four new formative assessments per grade level help teachers diagnose skill gaps, provide differentiated intervention, and periodically modify classroom instruction accordingly in order to maximize student attainment. Progress Monitoring Assessments are available beginning at grade 3 through grade 8, and can deliver a longitudinal look at students' learning paths.



Assessment Math & Reading

Emailed Progress Reports

Customized Study Guide

School-to-Home Connection

Differentiated Curriculum & Intervention

TEST 1 TEST 2 TEST 3 TEST 4

Formative Assessments

Four per grade level administered periodically through the year.

Differentiated Curriculum and Intervention

Automatically takes place following each assessment and is based on results of the assessment.

For more information, contact a Kid's College representative:

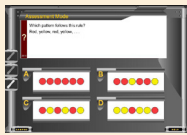
Toll-free: 1 (866) 552-9192

Email: info@learningthroughsports.com

www.ltskc.com



ASSESSMENT



Math



Reading

Emailed Progress Reports

Customized Study Guide

Differentiated Curriculum & Intervention

As your students complete each formative assessment, three processes take place:

1. Assessments generate easy-to-understand, visual **progress reports** at the student, class, school and district levels. Reports are automatically emailed to teachers and administrators.
2. Assessments automatically generate a **Customized Study Guide** for each student with printable skills practice worksheets targeting areas of weakness. *Great for the school-to-home connection, allowing parents to assist their children.*
3. Kid's College automatically assigns **differentiated online curriculum and intervention** to remediate specific skills as needed.

Administrator & Teacher Management Tools Include:

- **One-click Assessment** – Assign a class-wide assessment with one click.
- **Assessment Completion Reporting** – Know at a glance the status for each student on the four formative assessments.

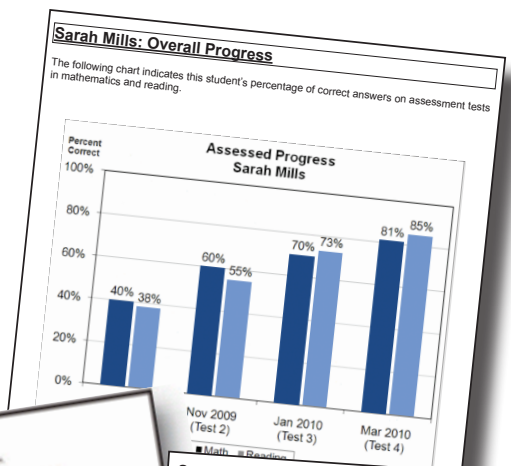
Progress Monitoring Assessments are a Perfect Solution for a Variety of Education Programs:

- RTI/Title I
- At Risk/Dropout Recovery
- Before/After School Programs
- Migrant/ELL
- Homeschool
- Special Education
- High Stakes Test Preparation
- Summer School
- Community/Workforce Programs

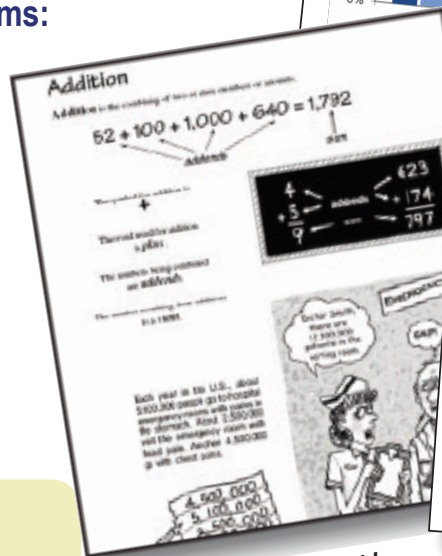
Key Benefits and Features Include:

time savings • screening • accountability
 help with developing Individualized Education Plans (IEP)
 high stakes test preparation

differentiated & prescriptive instruction • remediation and acceleration
 school-to-home connection • extending the school day
 continuity of learning (during school closures)



Emailed Progress Reports



Customized Study Guide

Skill	Standard(s)	SEP 2009 (Test 1)	NOV 2009 (Test 2)	JAN 2010 (Test 3)	MAR 2010 (Test 4)
Understand place value concepts related to decimals	5.1.spl.5	✗	✓	✗	✓
Solve addition and subtraction problems with fractions	5.2.spl.1, 5.2.spl.2	✗	✓	✗	✓
Solve real-world problems involving angles	5.2.spl.4	✓	✓	✓	✓
Solve real-world problems involving area	5.3.spl.1	✗	✓	✗	✓
Estimate measures of time	5.3.spl.3	✗	✗	✗	✗
Compare whole numbers	5.3.spl.3, 5.3.spl.5	✗	✓	✓	✓
Understand place value concepts related to whole numbers	5.3.spl.6	✗	✓	✓	✓
Solve division problems with whole numbers with and without remainders	5.4.spl.1	✗	✗	✗	✓
Identify and describe geometric patterns	5.4.spl.2	✓	✗	✗	✓
Apply substitution to solve problems	5.4.spl.3	✗	✗	✗	✗
Calculate the probability of an outcome or event	5.4.spl.4, 5.4.spl.5	✗	✓	✓	✓
Apply the identity property of numbers to solve equations	5.5.spl.2	✗	✓	✓	✓
Problem Solving Strategies	5.5.spl.3	✗	✓	✓	✓
Read and interpret charts and tables	5.5.spl.4	✗	✓	✓	✓
Read and interpret bar graphs	5.5.spl.6	✗	✗	✗	✗

